

8 17 10966 14 1267 1

MARK

MARK NO 23
DECEMBER 09 . JANUARY 10



— ANOTHER ARCHITECTURE —

KUMIKO INUI TOKYO - ALEXANDER BRODSKY MOSCOW - ZAHA HADID ROME - STEFANO BOERI LA MADDALENA - SEARCH & CHRISTIAN MÜLLER
VALS - SOU FUJIMOTO TOKYO - IÑAKI DOMINGO & CARLA ARRANZ SOBRINI SÃO PAULO - CHIAKI ARAI OFUNATO - LETTER FROM SICHUAN - FAT
LONDON - JENNY SABIN PHILADELPHIA



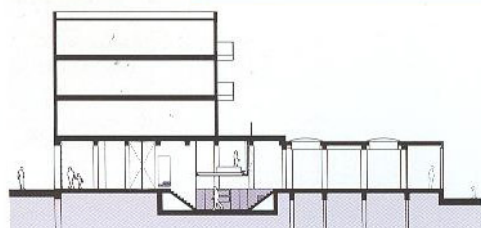
‘Compromise is not a solution’

— Sou Fujimoto —

dsa & lex

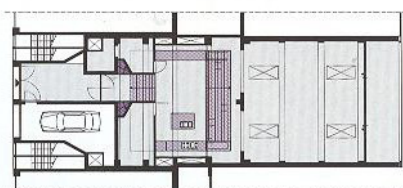
Text **Arthur Wortmann**
Photos **Maarten Laupman**

renovate a garage



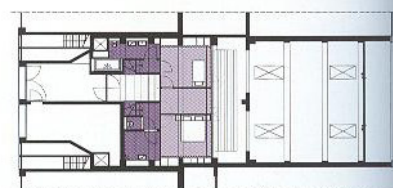
SECTION.

Maarten Laupman (occupant, photographer): 'One fine day, the owner of the building in Rotterdam where my photo studio is located told me he had bought an empty former ambulance garage in the same building block, but that he did not really know what to do with it. My interest was immediately aroused. I like old industrial buildings, I knew that the property was adjacent to a beautiful enclosed garden (also owned by my landlord) where no-one had access after office hours, and I could imagine it being turned into a lovely house. I was able to buy the property from him and with a great deal of perseverance, we have indeed managed to transform the space into a house. Now, I walk through the enclosed garden in the mornings on the way from my house to my studio.'



GROUND FLOOR.

Duzan Doepel (Doepel Strijkers Architects): 'I met Maarten by chance at a party, on the day that he heard about the old garage. We immediately began to develop ideas – yes, on the back of the proverbial beer mat. We hit it off right away. Shortly afterwards, a collaboration was started with Lex-Architecten, a bureau with a lot of experience in complex renovation assignments and complicated planning permission procedures. We developed and further elaborated the project plans together. Two interventions were essential. First of all, we took advantage of the height of the old garage by making an extra floor where the bedrooms would be located. In order to achieve that, we placed the large kitchen in a dugout in the middle of the house. Due



MEZZANINE.

to the upwards thrust of the high-level underground water, this was no easy task. Nine steel foundation piles keep the concrete construction in its place. These piles had to be driven into the ground in 2-m segments; once one part was in the ground, the next one was welded on top. The second essential intervention was to open up the property towards the enclosed garden with a gigantic glass window. When you enter the house, it is impossible to imagine the surprise that awaits you at the back, but each step brings you closer to the revelation.'

www.dsarotterdam.com
www.lex-architecten.nl

